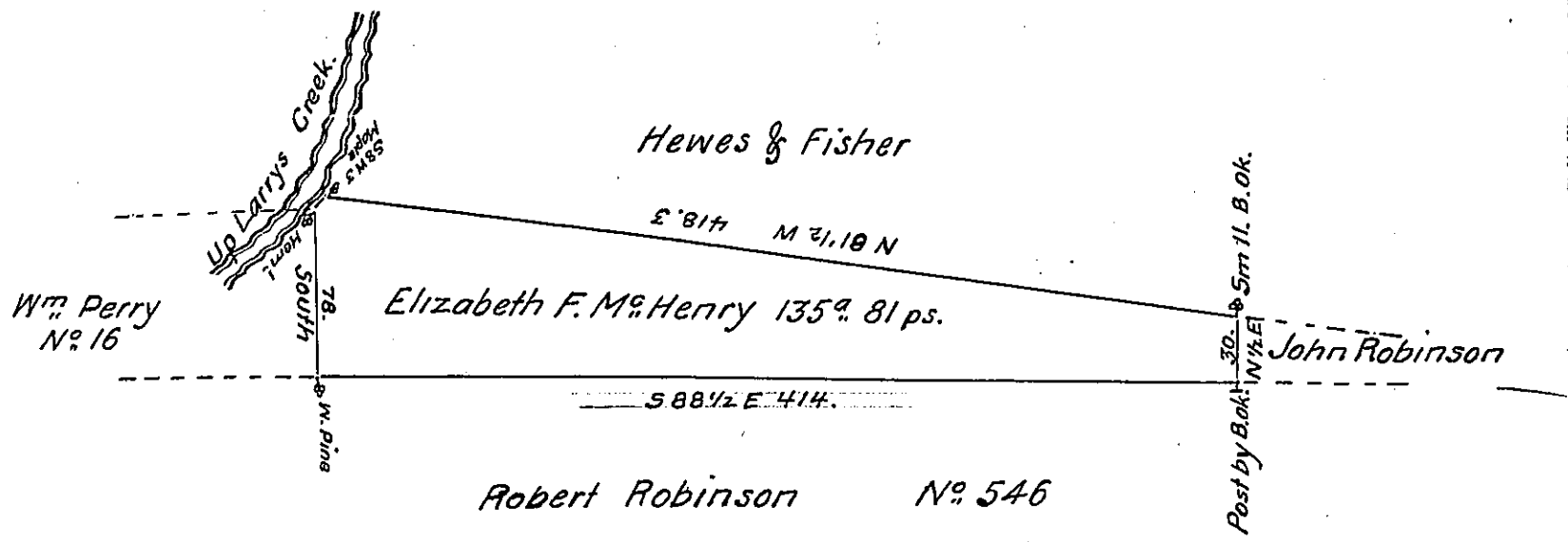


FORM NO. 1.



Situate in Lycoming Township Lycoming County on the East side of Larrys Creek and bounded as above described, Surveyed to Elizabeth F. McHenry on the 8th day of May 1844 by Virtue of her Warrant for 200 acres dated the 2^d of December 1843 Containing one hundred and thirty five Acres Eighty one perches with allowance of Six per Centum for Roads &c.

To Jacob Sallade Esquire }
 Surveyor General. ~ } Alexander H. McHenry D.S.

IN TESTIMONY that the above is a copy of the original remaining on file in the Department of Internal Affairs of Pennsylvania, made conformably to an Act of Assembly approved the 16th day of February 1833, I have hereunto set my hand and caused the Seal of said Department to be affixed at Harrisburg, this tenth day of January 1908

Alexander H. McHenry
 Secretary of Internal Affairs.